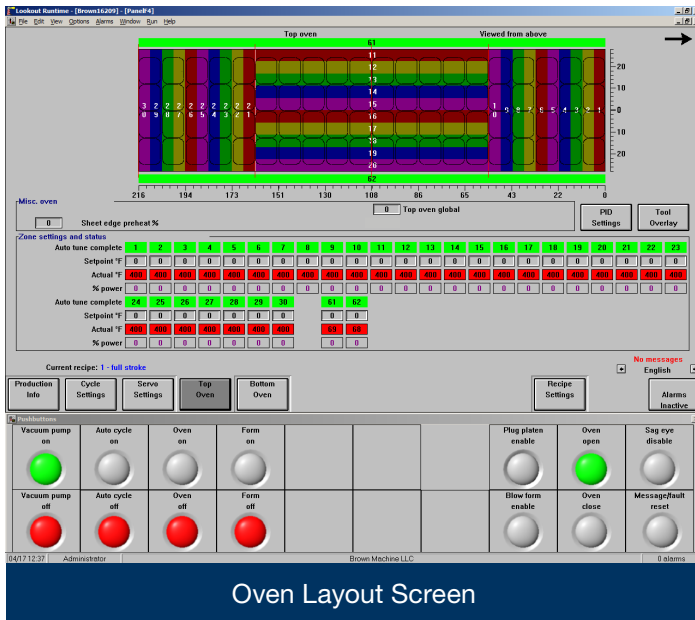
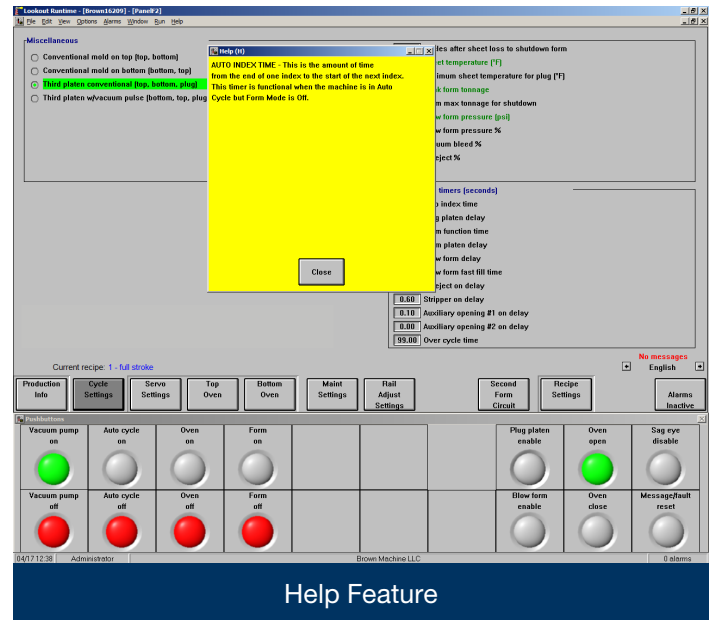


- Help feature for specific machine functions
- Password protection with default levels of security
- Note section within the recipe
- Historic log of all HMI operator actions
- Strain gauges incorporated for over tonnage protection within the form station
- E-stops and guard door identification



Oven Layout Screen



Help Feature

Servo

- Display warning and light when servo motor and drives are approaching fault values
- Diagnostics of the servo motion controller system

Ovens

- Mold layouts within the oven screen
- Scaled dimensions and shot lines within the oven screen
- Ovens turn on sequentially to minimize power consumption
- Sheet sag eye oven protection circuitry

Patented Servo Plug Drive – Increased process window with improved material distribution

- Teach mode
- Protection circuit
- Pressurized lubrication system circuit
- Operator initiated start-up mode
- Cold sheet plug assist protection circuit

Index & Rails:

- Rail protection circuitry to prevent rail/mold damage
- Self-adjusting index motor tension system
- Preventative maintenance scheduling

Green Technology:

- Regeneration of servo power for reuse
- Independent transformer to allow Supervisory PC to remain under power

EXPANDED SMART CONTROL

Expanded Smart Control is available as an option and adds even more features for intelligent system performance.

Process

- Vacuum and pressure circuits trending
- Self-adjusting head to maintain a preset forming tonnage within the process recipe
- Thermocouple control for temperature control unit adjustment and upper/lower tool alignment protection

Servo

- Self-adjusting electronic regulators for form station balance cylinders to optimize servo motor efficiency



Creators of world-class machinery,
tooling and automation systems
RUN WITH CONFIDENCE

